



International Guest House

International Guest House (IGH) is a great place for students looking for the quintessential Boston experience. IGH is located in historic Back Bay, one of Boston's most desirable and safest neighbourhoods!

Address

237 Beacon Street
Boston, Massachusetts 02116

Type of accommodation
Student Residence.

Age of students
16 years and over.

Check-in and check-out
Check-in Sundays after 14.00.
Check-out on Sundays by 11.00. Other days and times by arrangement.

Meals
Daily buffet style breakfast and dinner included.

Kitchen/cooking facilities
Kitchen facilities are not available in all rooms. Basic kitchen utilities are available in a limited number of rooms: microwave, refrigerator, small stove.

Lounge Area
TV room provides students with a comfortable area to watch TV and also an opportunity to mingle with other guests. There is a coin change machine and vending machine for your convenience.

Rooms
Rooms are single or shared (quad). Rooms are equipped with beds, linens, towels, dressers and desks.

Bathrooms

Single rooms have a private bathroom. Shared rooms (2-4 students) share a bathroom. Some double rooms share shower/bathroom with an adjacent double. There are separate communal bathrooms for men and women.

Utilities

Electricity, heating and lighting are included in the price. Electricity supply is 120V, 60Hz.

Internet and phone

Every room has a phone that you can use for local calls only. International calls require a calling card. Free wireless Internet through the building.

Laundry

Coin-operated laundry facilities are available.

Security and keys

IGH employs full-time staff and a watchman who are available 24-hours a day. One key is provided per student and used for exterior door and dorm room; \$50 fee for a lost key.

Bed linen, towels and cleaning

Bed linens and towels will be provided by the residence. Cleaners will wash and change linens once a week. Common

areas and bathrooms are cleaned once or twice a week. Bedrooms are only cleaned prior to student arrival.

Deposit & Damage Charges

At check-in IGH will collect a cash deposit \$200 (per person) + Key refundable security deposit which will be returned at check-out time, as long as there are no damages to your room.

Visitors







Visitors are allowed during the day. Prior reservation is required to arrange for an overnight stay. Please contact the front desk.

Noise and restrictions

Students are requested to be considerate to their neighbours and keep noise levels to a minimum, especially after 22.00.

Availability

Available all year.

-  Breakfast & dinner available
-  Disabled access
-  Private bathrooms (on request)
-  Telephones in rooms
-  Air Conditioning
-  Wireless internet

Distance to school

20 minutes by train; 30 minutes on foot.

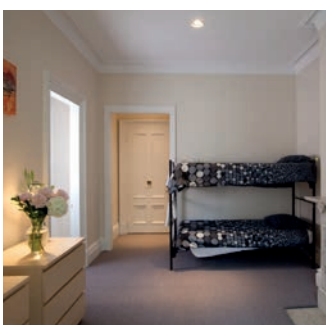
5-10 minutes away

Subway station, railway station, cafés, bars and restaurants, cinema, pharmacy, shops and supermarkets, parks and gardens.

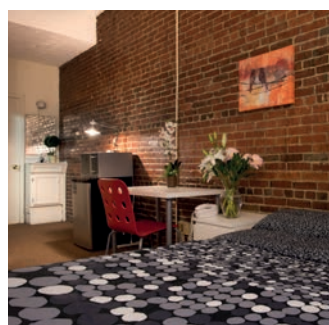
Local transport

The "T," Boston's subway and bus system has stops within a 5 minute walk from the guest house. A 7-day pass costs \$22.

(Prices subject to change)



Shared bedroom



Double bedroom



Lounge area

