

EC Toronto 30+: Superior Parkside Residence

DESCRIPTION OF ACCOMMODATION

The residence features an on-site dining program with a variety of food stations, and cooking stations. Enjoy a gourmet meal or stop by for a snack at the fully-equipped Parkside Marketplace. A 24-hour fitness centre with private yoga space a card operated laundry centre, secured bike storage, and on-site repair station are also available at the residence.

The residence is equipped with everything you need to study and socialize as well, including private meeting and study rooms, and a fabulous gaming space with billiards, and video games. There are also a variety of fun social programs and events happening at the residence.

Each apartment consists of two bedrooms, a 3-piece washroom, and a comfortable living area with free WI-FI and cable TV. The bedrooms are single rooms and there are 2 students per apartment. The rooms have a twin-sized bed, a desk, and lots of storage space.

DESCRIPTION OF LOCAL AREA

EC Toronto's student residence is located in the heart of Toronto's university and college district, steps from Toronto's Ryerson University, and the Ontario College of Art and Design. Located on Carlton Street, the residence is a short walk from the beautiful Allan Gardens Conservatory, and the Toronto Eaton Centre. This centrally located residence is close to some of Toronto's top attractions, including great restaurants, cafes, theatres, concert halls, and shopping.

Just a 7-minute walk from Toronto's Yonge-University subway line, the residence is the perfect base to explore Toronto. The Carlton multiplex Cinema is only a short walk away and features Hollywood, Independent, Canadian and Foreign films. The residence is only 15 minutes away from Toronto's famous theatre district, the third largest English-speaking theatre district in the world. Take your pick from the variety of fabulous Broadway shows at the Princess of Wales Theatre or the Royal Alexandra theatre.

NUMBER OF BEDROOMS

2

ACCOMMODATION ARRIVAL AND DEPARTURE DAY

- Arrival day: Saturday
Check in: 15:00
- Departure day: Saturday
Check out: 11:00

BOARD STATUS

ADDRESS

Parkside Residence
111 Carlton Street
Toronto, Ontario
M5B 2G3

PHONE NUMBER

+1 416 977 8000

CANCELLATION PRIOR TO ARRIVAL

Students cancelling fewer than 14 days before arrival will be charged a one-week's accommodation fee at the standard accommodation rate and an accommodation placement fee.

ARRIVAL PROCEDURES FOR STUDENTS

Please send flight details or an estimated arrival time at the time of booking accommodation or as soon as possible once known. On arrival, check in at the security desk in the lobby. A staff member will give you the keys and show you to your room. On departure, please leave your room tidy and return your keys at reception in the lobby.

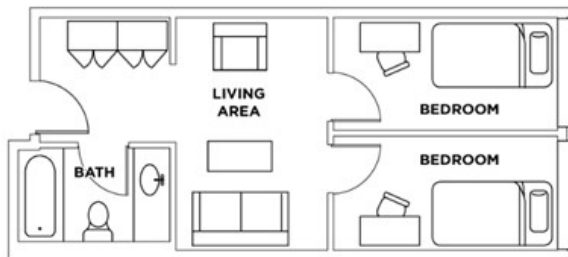
JOURNEY TO SCHOOL

Metro-25 minutes

Cycle-30 minutes

The most convenient way for students to get from the residence to school is by metro, approximately a 25-minute journey. To travel to the school, follow the directions below:

- 1.Walk west on along Carlton Street for 550 metres to College Street (7 minutes).
- 2.Enter College Station.
- 3.Board Line 1 (Yonge-University) subway and travel northbound 7 stops to Eglinton Station (12 minutes).
- 4.Exit Eglinton Station and walk west along Eglinton to 124 Eglinton Avenue West, Suite 400 (6 minutes).



NOTES

- May to September: B&B only. Full buffet breakfast with hot and cold options (weekdays 7:30am to 10:30am, weekends and holidays 8:30am to 11:00am). September to April: Full Board. Full breakfast, lunch, and dinner. "Lunch to go" program available for \$6 (visit Parkside front desk for details)
- Suites are male or female only
- Suites are cleaned weekly. Students are responsible for cleaning their own bedrooms
- No smoking
- No overnight guests
- Residence is open to students aged min. 18
- \$50 replacement charge for lost keys, \$30 for lost access card, \$10 for lost laundry card

CANCELLATION AFTER ARRIVAL

Students leaving their accommodation must give notice in writing 4 weeks prior to termination. After deducting the price of accommodation used (including the required notice period charged at standard accommodation rates) students will be refunded the remaining accommodation costs. If 4 weeks' notice is not provided, a cancellation fee equal to 4 weeks of accommodation will apply. Please note: Certain accommodation options may be subject to special cancellation charges. Should these differ from above, students will be notified at the time of cancellation

ACCOMMODATION INCLUDES

- Communal Kitchen
- Communal Lounge
- Study Room
- Games Room
- Multimedia room and lounge
- Free Wi-Fi facilities
- Cable TV
- Central air conditioning
- Fitness center
- Bed linen provided
- Students need to bring their own towels
- Coin operated laundry facilities available
- 24-hour on-site security
- ATM in building



IF YOU DID NOT REQUEST AN AIRPORT PICK-UP, YOU HAVE SEVERAL WAYS TO GET TO YOUR RESIDENCE

1. Board UP 4084 Express Union Station train (\$12.00 cash) and travel 3 stops to Union Station (25 minutes)
2. Walk to UP Express Pearson Airport
3. Exit train and transfer to Line 1 (Yonge-University) Union Station (4 minutes)
4. Travel northbound to College Station (6 minutes)
5. Exit College Station and head north on Yonge Street toward College Street (7 minutes)
6. Turn right on Carlton Street and walk to 111 Carlton Street