

BEDFORD-STUYVESANT SHARED STUDENT HOUSE

NEIGHBORHOOD

Our BSL shared student house is located in Bedford–Stuyvesant, also known as Bed-Stuy for short. It is a neighborhood of 153,000 inhabitants in the north central portion of Brooklyn. Recently, the neighborhood has seen substantial change as young professionals and artists are moving in and new restaurants, bars and businesses crop up to cater to them. You can find a selection of stores, bars and restaurants on avenues such as Lewis, Bedford and Marcus Garvey. It's a diverse neighborhood, with tons of commercial activity and residents of all ages and ethnicities.

You can spend a sunny afternoon or fall evening relaxing in Fulton park, or take a stroll through the Bed-Stuy historic district, which comprises several blocks of beautiful old brownstone houses. The area has one of the largest amounts of original Victorian architecture in the country. With over 6,000 buildings built before 1913, it is a unique and historically close-knit neighborhood in the heart of Brooklyn, with some inimitable tree-lined streets, and abundant architectural and economic history. All of this is just 25-35 minutes to Manhattan by subway.

HOUSE LOCATION

The house is located on **29 MacDougal Street, Brooklyn** (NY. 11233), and is shared with other students from Brooklyn School of Languages.

You can find the following facilities close by:

- Pharmacy: 1 minute walk
- Laundromat: 1 minute walk
- Convenience store: 1 minute walk – open 24/7
- Restaurants: a variety (Chinese, Indian, fast food) within 5 minutes' walk

Transportation links:

- Closest subway stop: **Ralph Avenue**, less than 1 minute walk (**C train, blue line**)
- Closest bus stop: **Fulton St/Ralph Av**, less than 1 minutewalk(**B25/B47**)

AMENITIES

This is an 1800-sq ft. house, with separate exterior entrances for the first floor and garden level. The house has 3 bedrooms, 2 bathrooms, a large kitchen and living room, and an outdoor space (only accessible from the shared room). The kitchen has a full array of modern appliances including a large fridge and microwave. You will share the common areas of the house (kitchen, living-dining room, and bathrooms) with the other students, and will have full access to the equipped kitchen to cook your own meals.

Bed linens are provided but students should bring their own towels. Wi-Fi is available for free.

The house's common areas will be cleaned once a week, students are responsible for the cleanliness and tidiness of their bedroom.

DEPOSIT

Students will be asked to leave a \$100 security deposit by credit card at school on the first day. It will be refunded back on to the card once we have checked the bedroom for cleanliness, laundered sheets, any damage etc...

ARRIVAL AND DEPARTURE

Arrival day is on the Sunday before your course starts. Check-in is from 4pm. Departure day is on the Saturday after your course ends. Check-out is at 12 noon.

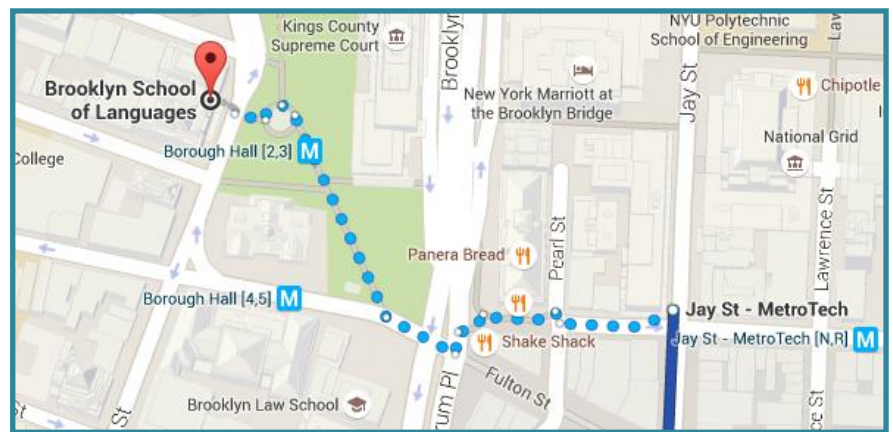
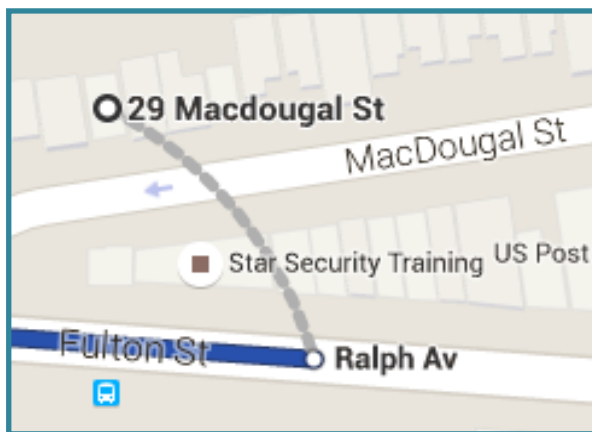
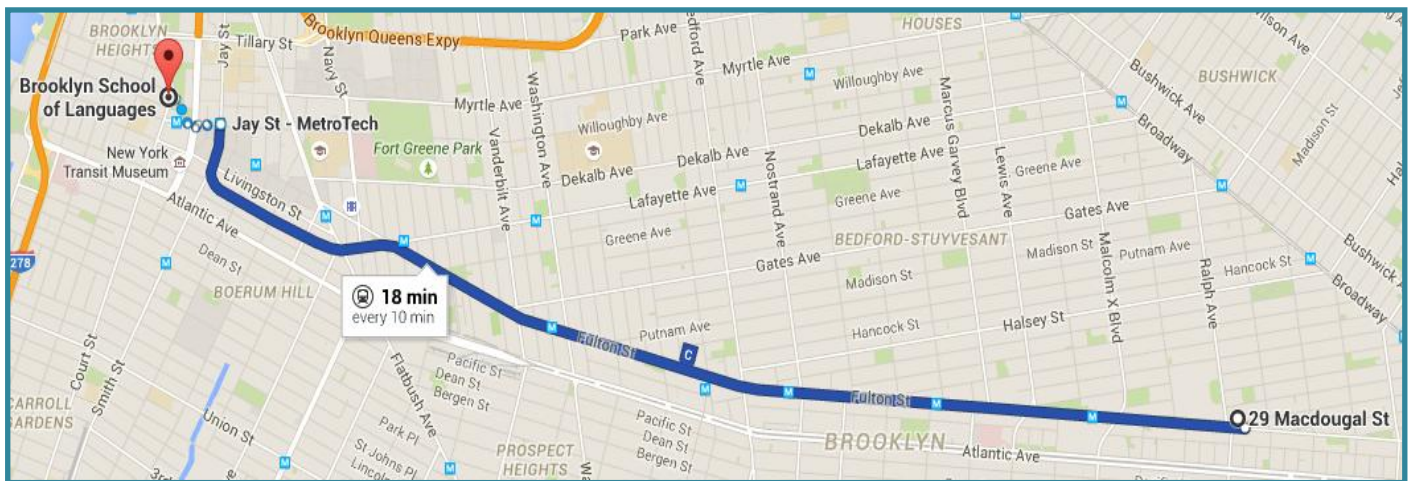
AVAILABILITY

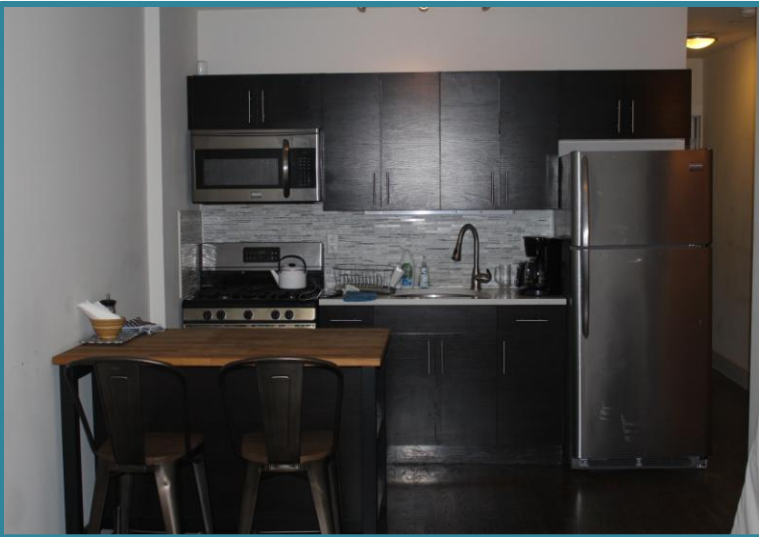
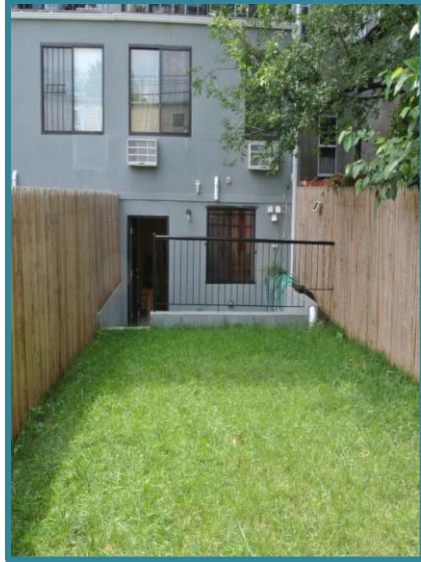
All year round.

JOURNEY TO SCHOOL

The easiest way to get to school is by subway, from **Ralph Avenue** subway station (just across the road when you leave the house).

Take the **C** train going towards 168 Street (Uptown/Manhattan). Get off at **Jay St - MetroTech** and walk to 16 Court Street (about 5 minutes' walk). The whole journey will take 25 minutes maximum.





Top Floor Double-Bedded Room



Top Floor Single-Bedded Room

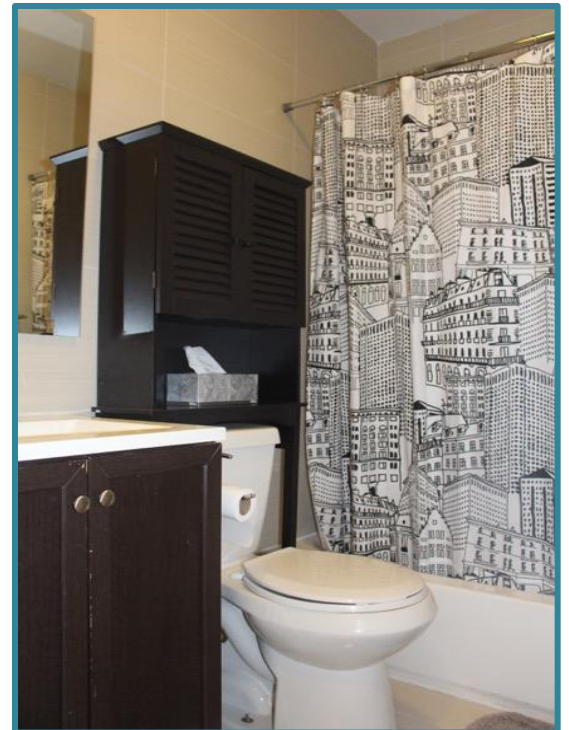


Ground Floor Shared Room Double Bed



Ground Floor Shared Room Single

Ground Floor Bathroom



BEDFORD-STUYVESANT

